



# WAUKEGAN PARK DISTRICT

2000 BELVIDERE ST. • WAUKEGAN, IL 60085-6172 • PHONE (847) 360-4711 • TTY (847) 662-3800 • WWW.WAUKEGANPARKS.ORG

## Revised for Bid Addendum 1

June 29, 2018

Dear Prospective Contractor:

The Waukegan Park District is accepting bids for:

### **2018 FORD E450 GLAVAL UNIVERSAL OR EQUIVALENT VEHICLE**

Bids are due on Monday, ~~July 16~~, **July 30, 2018 at 10:00 AM**. at the Park Maintenance Facility, 2211 Ernie Krueger Circle, Waukegan, IL 60087. The bids should be clearly labeled "**2018 Ford E450 Glaval Universal or Equivalent Vehicle**".

We appreciate your bidding on the enclosed item and welcome the opportunity to do business with you.

If you have any questions please contact Chris Murphy at 847-360-4752 or by email at [cmurphy@waukeganparks.org](mailto:cmurphy@waukeganparks.org).

Sincerely,

*Kristy De Boer*

Kristy De Boer  
Park Planner

KDB/kdb  
Enclosures: 1

## NOTICE TO BIDDERS

THE WAUKEGAN PARK DISTRICT, LAKE COUNTY, ILLINOIS (“OWNER” OR “PARK DISTRICT”), INVITES BIDS FOR THE FOLLOWING PROJECT:

### 2018 FORD E450 GLAVAL **UNIVERSAL OR EQUIVALENT** VEHICLE

BID DOCUMENTS, INCLUDING INSTRUCTIONS TO BIDDERS, DRAWINGS, TECHNICAL SPECIFICATIONS, GENERAL AND ANY SPECIAL CONDITIONS AND BID FORMS INCLUDING REQUIRED CONTRACTOR CERTIFICATIONS ARE AVAILABLE ELECTRONICALLY BY CONTACTING THE WAUKEGAN PARK DISTRICT PARKS DEPARTMENT AT 847-360-4725 OR BY EMAIL AT [LSALINAS@WAUKEGANPARKS.ORG](mailto:LSALINAS@WAUKEGANPARKS.ORG).

EACH BID SHALL BE PLACED IN A SEALED ENVELOPE AND CLEARLY MARKED “WAUKEGAN PARK DISTRICT, “2018 FORD E450 GLAVAL **UNIVERSAL OR EQUIVALENT** VEHICLE”. THE ENVELOPE SHALL BE ADDRESSED AND DELIVERED TO AND RECEIVED BY THE PARK DISTRICT AT THE FOLLOWING LOCATION: WAUKEGAN PARK DISTRICT, PARK MAINTENANCE FACILITY, 2211 ERNIE KRUEGER CIRCLE, WAUKEGAN, ILLINOIS 60085. NO RESPONSIBILITY SHALL BE ATTACHED TO ANY PERSON FOR PREMATURE OPENING OF A BID NOT PROPERLY IDENTIFIED.

BIDS SHALL BE RECEIVED UNTIL ~~JULY 16,~~ **July 30, 2018**, AT 10:00 A.M FOR 2018 FORD E450 GLAVAL **UNIVERSAL OR EQUIVALENT** VEHICLE. IMMEDIATELY THEREAFTER, THE BIDS WILL BE PUBLICLY OPENED AND READ ALOUD. BIDS RECEIVED AFTER THAT TIME OR AT A DIFFERENT LOCATION WILL BE REJECTED.

THE WAUKEGAN PARK DISTRICT RESERVES THE RIGHT TO WAIVE TECHNICALITIES, TO ACCEPT OR REJECT ANY OR ALL BIDS, TO ACCEPT ONLY PORTIONS OF A BID AND REJECT THE REMAINDER. OWNER WILL AWARD THE PURCHASE TO THE LOWEST MOST RESPONSIBLE AND RESPONSIVE BIDDER, AS DETERMINED BY OWNER. IN CONSIDERING THE BIDDER’S RESPONSIBILITY, THE OWNER MAY EVALUATE, AMONG OTHER FACTORS, THE ABILITY OF THE BIDDER TO PROVIDE EXPERIENCED LABOR SUFFICIENT IN NUMBERS TO TIMELY AND PROPERLY COMPLETE THE SERVICES, THE FINANCIAL CAPABILITY OF THE BIDDER, AND THE PERFORMANCE OF THE BIDDER.

BIDS SHALL NOT INCLUDE FEDERAL EXCISE TAX OR STATE SALES TAX FOR MATERIALS TO BE INCORPORATED IN, OR TOTALLY CONSUMED IN THE PROSECUTION OF THE WORK. A TAX EXEMPTION CERTIFICATE WILL BE FURNISHED BY THE PARK DISTRICT AT THE REQUEST OF THE BIDDER. THE DISTRICT’S TAX EXEMPTION NUMBER SHALL ONLY BE USED BY THE SUCCESSFUL BIDDER FOR THE WORK OF THIS PURCHASE.

NO BID MAY BE WITHDRAWN AND ALL BIDS SHALL REMAIN FIRM FOR SIXTY (60) DAYS AFTER THE BID OPENING.

THE CONTRACTOR(S) SELECTED WILL ALSO BE REQUIRED TO COMPLY WITH ALL APPLICABLE FEDERAL, STATE AND LOCAL LAWS, RULES, REGULATIONS AND EXECUTIVE ORDERS, INCLUDING BUT NOT LIMITED TO THOSE PERTAINING TO EQUAL EMPLOYMENT OPPORTUNITY.

BY ORDER OF THE BOARD OF PARK COMMISSIONERS OF THE  
WAUKEGAN PARK DISTRICT

JAY LERNER, EXECUTIVE DIRECTOR

WAUKEGAN PARK DISTRICT (847) 360-4725  
PUBLISHED DATE: JULY 28, 2018



## **Waukegan Park District**

2211 ERNIE KRUEGER CIRCLE – WAUKEGAN, IL 60087

***Chris Murphy / CMurphy@WaukeganParks.org***

847-360-4752

---

**2018 Ford E450 Glaval Universal **or Equivalent**  
12+2 Passenger with Rear Wheelchair Lift**

---

### **Chassis Specs:**

- Ford E350 Super Duty Chassis
- Gas Engine: 6.2 L V-8
- Electronic 6-Speed Automatic with Overdrive
- 158" Wheelbase
- 225 Amp Alternator
- Dual 750 CCA 78 AMP Batteries
- Twin I-Beam Independent Front Suspension
- Rear Leaf Spring Suspension
- Hydraulic Power Assist
- Tilt Steering
- Cruise Control
- 40 Gallon Fuel Tank
- LT225/75RX16E BSW AS Tires

- 16"X6" White Painted Steel Wheels
- Shuttle Bus Prep Package
- Daytime Running Lights
- AM/FM Stereo with Single CD
- Chrome Grille
- Engine Block Heater (750 Watts)

**Conversion Features:**

- Fully Galvanized Structure Frame and Floor
- Single-Piece Vacuum-Laminated Structural Panel Assembly Including Steel Frame, Dense Foam Insulation, Galvanneal Steel Exterior and Grey Vinyl-Coated Luan Interior Panels
- Galvanized Step Well
- 5/8" Pressure-Treated MarineTech Plywood Flooring
- Flooring, Gray Koroseal Ribbed Center; Smooth Under Seats
- Fiberglass Front Cap and 5-Piece ABS Rear Cap
- 32" x (22" or 46") Windows with T-Slides
- Full View Curb Window
- Non-Rusting, Manual Double Entry Door
- Track Seating
- Electrical Panel
- Stepwell Lights
- Modesty Panel, Curb Side
- Stainless Steel Stanchion, Curb Side
- White Exterior
- Fiberglass Composite Roof
- Side Mounted Rear View Mirrors
- Rear Center Brake Light
- Front Chrome Bumper
- Rear Bumper, Powder Coated Steel
- Rear Mud Flaps
- Exterior Rub Rails
- Galvanized Steel Wheel Wells
- Undercoating with Warranty
- Window Drip Rail
- Front End Alignment

**Included Options:**

- Valve Stem Extensions
- Stainless Steel Wheel Covers
- 70,000 BTU Air Conditioning
- Heater, 65,000 BTU
- Cold Weather Package: Includes Aux Heater Pump & Wrapped Lines
- **Rear View Camera System with 7" LCD Monitor**

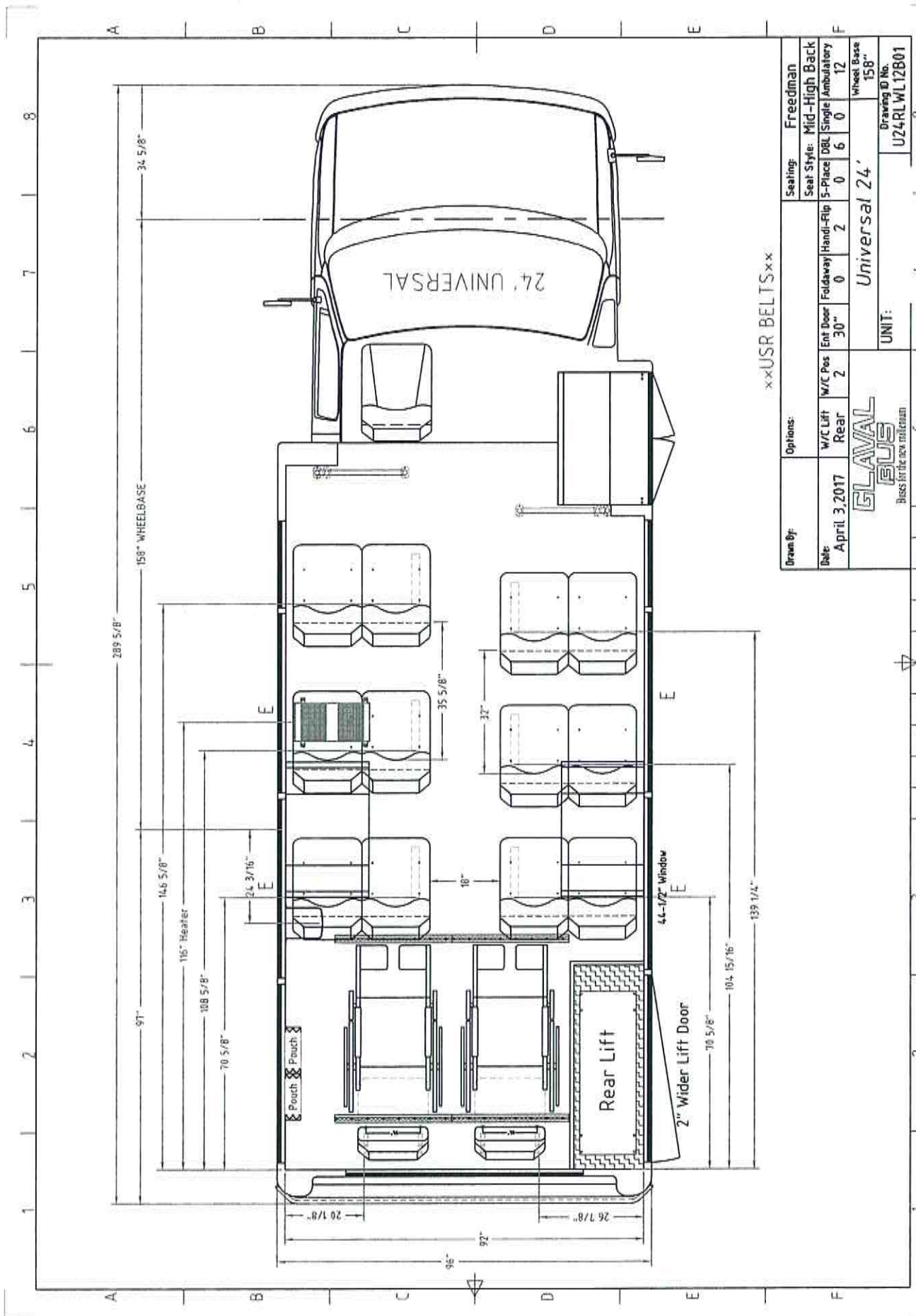
- **Audible Back-up Sensor System**
- Front LED Back Light Destination Sign
- Additional ADA Exterior Light
- LED Exterior Lighting Package
- Bonded Windows
- Mirrors, Exterior Rosco Accustyle, Heat/Remote
- Electric Door 30" with External Key Switch
- Driver's Side Extruded Aluminum Running Board
- Anti-Ride Panel for Rear Bumper
- Q'Straint Mesh Storage Pouch [2]
- Q'Straint 12" Seat Belt Extension
- Q'Straint Q-8300-A1 QRT Max Retractor System for L-Track [2]
- Braun NCL919FIB-HB-2 Century 800# Wheelchair Lift Package
- Hand Rail, Forward of Entrance Door
- Hand Rails, Overhead
- **Overhead Luggage Racks**
- Stanchion & Modesty Panel Behind Driver
- Standee Line & Standee Signage
- Safety Package: 5# Extinguisher, 25 Unit First Aid Kit, Triangles & Back-up Alarm
- Auto Cloth Gray Ceiling & Walls
- Altro Wood-Look Flooring
- Freedman Passenger Seating: 17.5" Mid-High Double Rigid [6]
- Freedman Passenger 18" Single Handi-Flip Seating [2]
- Passenger Seat Fabric Level 5: #832 Mono Gray CMI NPF Pinwheel
- Anti-Vandalism Grab Rail, Top Mounted [6]
- U.S. Arm Rest [6]
- Ford OEM Driver's Seat Cover
- Under Seat Retractable Seat Belts
- Flextech Fast Idle with Interlock
- Graphics & Lettering for *Waukegan Park District* – SEE BELOW

R61 Trade In Vehicle



New Graphics & Lettering for New Vehicle





<b>Drawn By:</b>	<b>Options:</b>	<b>Seating:</b>	<b>Freedman</b>
<b>Date:</b> April 3, 2017	<b>W/C Lift:</b> Rear 2	<b>Seal Style:</b> Mid-High Back	
	<b>Ent Door:</b> 30"	<b>Foldaway:</b> 0	<b>5-Place:</b> 0
	<b>Handi-Flip:</b> 2	<b>DBL Single:</b> 6	<b>Ambulatory:</b> 0
		<b>Wheel Base:</b> 158"	
<b>GLAVVAL BUS</b> Buses for the new millennium		<b>Universal 24'</b>	
<b>UNIT:</b>		<b>Drawing ID No.:</b> U24RLWL12801	



**WAUKEGAN PARK DISTRICT**  
**ONE (1) 2018 FORD E450 GLAVAL UNIVERSAL OR EQUIVALENT**  
**BID PROPOSAL**

THE UNDERSIGNED, AS A BIDDER, DECLARES THAT HE/SHE HAS CAREFULLY EXAMINED THE SPECIFICATIONS AND ALL PERTINENT INSTRUCTIONS AND STATEMENTS OF REQUIREMENTS. ANY EXCEPTIONS OR DEVIATIONS FROM THESE SPECIFICATIONS MUST BE ADDRESSED IN WRITING WITH THE BID.

THE UNDERSIGNED UNDERSTANDS THAT THE OWNER RESERVES THE RIGHT TO REJECT ANY OR ALL PROPOSALS OR TO WAIVE ANY INFORMALITY OR TECHNICALITY IN ANY PROPOSAL.

UNLESS THE FOREGOING PROPOSAL IS FREE FROM ALTERATIONS, ADDITIONS AND DEDUCTIONS, AND UNLESS THE NAME OF THE BIDDER AS SIGNED THERETO IS COMPLETE AND CORRECT, IT MAY BE REJECTED AS INFORMAL.

THE BIDS SHALL BE SIGNED BY A PRINCIPAL OF THE BIDDING COMPANY, INDIVIDUALS AND PARTNERSHIPS SHALL HAVE BOTH SIGNATURES. IF THE BIDDER IS A CORPORATION, THE BID SHALL BE STAMPED WITH THE FIRM CORPORATE SEAL.

**BID OPTION**

COST FOR ONE (1) 2018 FORD E450 GLAVAL UNIVERSAL OR EQUIVALENT	\$ _____
GOVERNMENT DISCOUNT	- \$ _____
DISCOUNTS, AVAILABLE REBATES OR REFUNDS (PLEASE SPECIFY) _____	- \$ _____
TRADE IN 2006 FORD R61 ~ Approximately 48,500 Miles	- \$ _____
TOTAL DELIVERED COST	\$ _____

**DELIVER TO:** 2211 ERNIE KRUEGER CIRCLE, WAUKEGAN, IL 60087

\* WARRANTY-GUARANTEE-MANUFACTURER'S AND DEALERS DURATION-COVERAGE

SPECIFY \_\_\_\_\_

Firm Name	
Address	Corporate Seal
City	State
Zip	Phone
By: _____	Title
Signature	Date

DELIVER SEALED BID TO: KRISTY DE BOER  
 2018 FORD E450 GLAVAL UNIVERSAL OR EQUIVALENT  
 WAUKEGAN PARK DISTRICT, 2211 ERNIE KRUEGER CIRCLE,  
 WAUKEGAN, IL 60087  
**DUE: MONDAY, ~~JULY 16~~, JULY 30, 2018 AT 10:00 A.M.**