



22 E. Chicago Avenue
Suite 200A
Naperville, IL 60540
T 630.961.1787
hitchcockdesigngroup.com

Grosche Field Backstop Replacement

1800 North Sheridan Road
Waukegan, Illinois 60087

Waukegan Park District
1324 Golf Road
Waukegan, Illinois 60087

Issue for Bid
December 10, 2021

Revised for
Addendum #1

Project Team

Landscape Architect Sheets: L-series
Hitchcock Design Group
22 East Chicago Avenue, Suite 200A
Naperville, Illinois 60540
T 630.961.1787

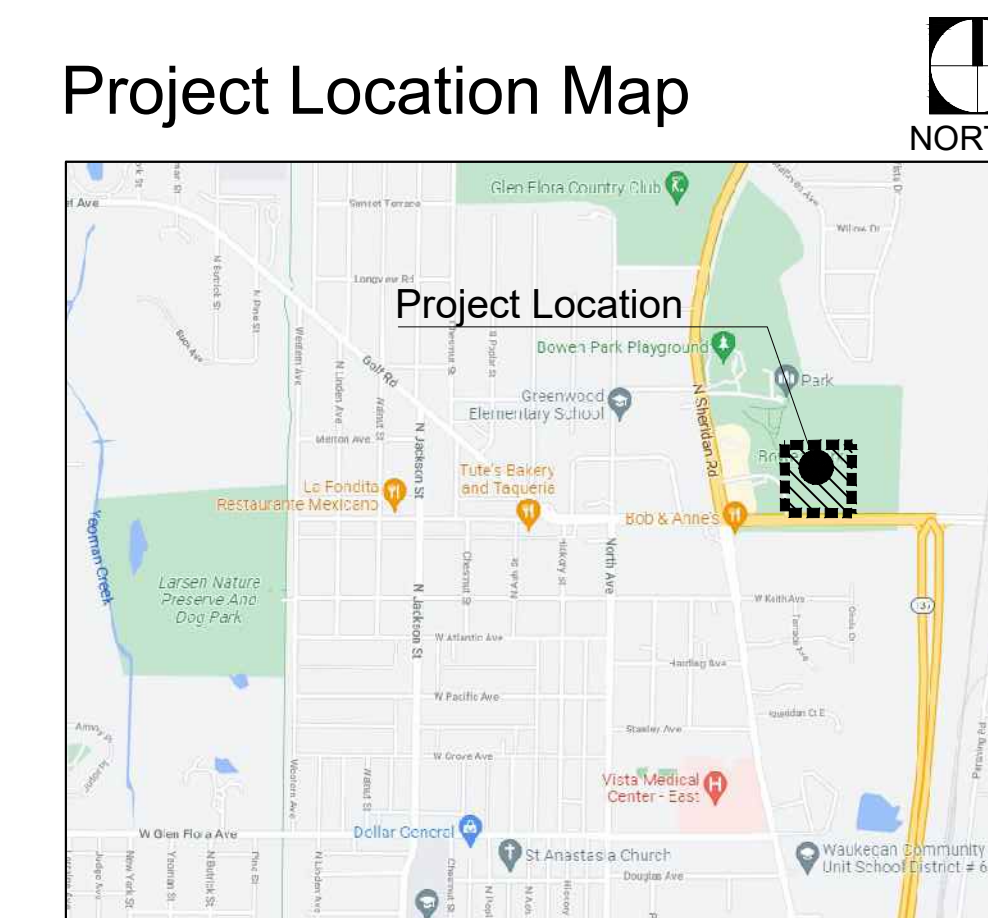
General Notes

1. Basemap information obtained from plans prepared by IMEG Corp. received November 29, 2021.
2. Verify site conditions and information on drawings. Promptly report any concealed conditions, mistakes, discrepancies or deviations from the information shown in the Contract Documents. The Owner is not responsible for unauthorized changes or extra work required to correct unreported discrepancies.
3. Secure and pay for permits, fees and inspections necessary for the proper execution of this work. Comply with codes applicable to this work.
4. Refer to specifications for additional conditions, standards and notes.
5. The plans and specifications are intended to be completed entirely by the contractor. Unless clearly identified as "By Owner," all work contained within is the responsibility of the general contractor.

Sheet Index

L1.0	Existing Conditions Plan
L2.0	Site Preparation and Removals Plan
L3.0	Grading, Layout, and Materials Plan
L3.1	Grading, Layout, and Materials Plan Alternate
L4.0-L4.2	Details

Project Location Map



It's smart. It's free. It's the law.

Call Before You Dig
JULIE
ILLINOIS ONE-CALL SYSTEM

Call before you dig.
800.892.0123

HORIZONTAL DATUM: NAD83 (2011)
 VERTICAL DATUM: NAVD88
 REFERENCE MONUMENT:
 NGS WK 105 (DG 8502)
 N: 2,083,247.26
 E: 1,119,700.45
 ELEV.: 666.66

SITE BM #1
 PK NAIL
 N: 2,083,296.7740
 E: 1,120,166.4800
 ELEV.: 642.02

SITE BM #2
 PK NAIL
 N: 2083666.4070
 E: 1120165.7490
 ELEV.: 640.08

PROPERTY BOUNDARIES DRAWN PER TAX MAPS



22 E. Chicago Avenue
 Suite 200A
 Naperville, IL 60540
 T 630.961.1787
 hitchcockdesigngroup.com

PREPARED FOR
Waukegan Park District
 1324 Golf Avenue
 Waukegan, Illinois 60087

PROJECT
Grosche Field Backstop Replacement
 1800 North Sheridan Rd
 Waukegan, Illinois 60087

ISSUE FOR BID
 DECEMBER 10, 2021

REVISIONS

No	Date	Issue

CHECKED BY: EFH
 DRAWN BY: JFB
 SHEET TITLE:
Existing Conditions Plan

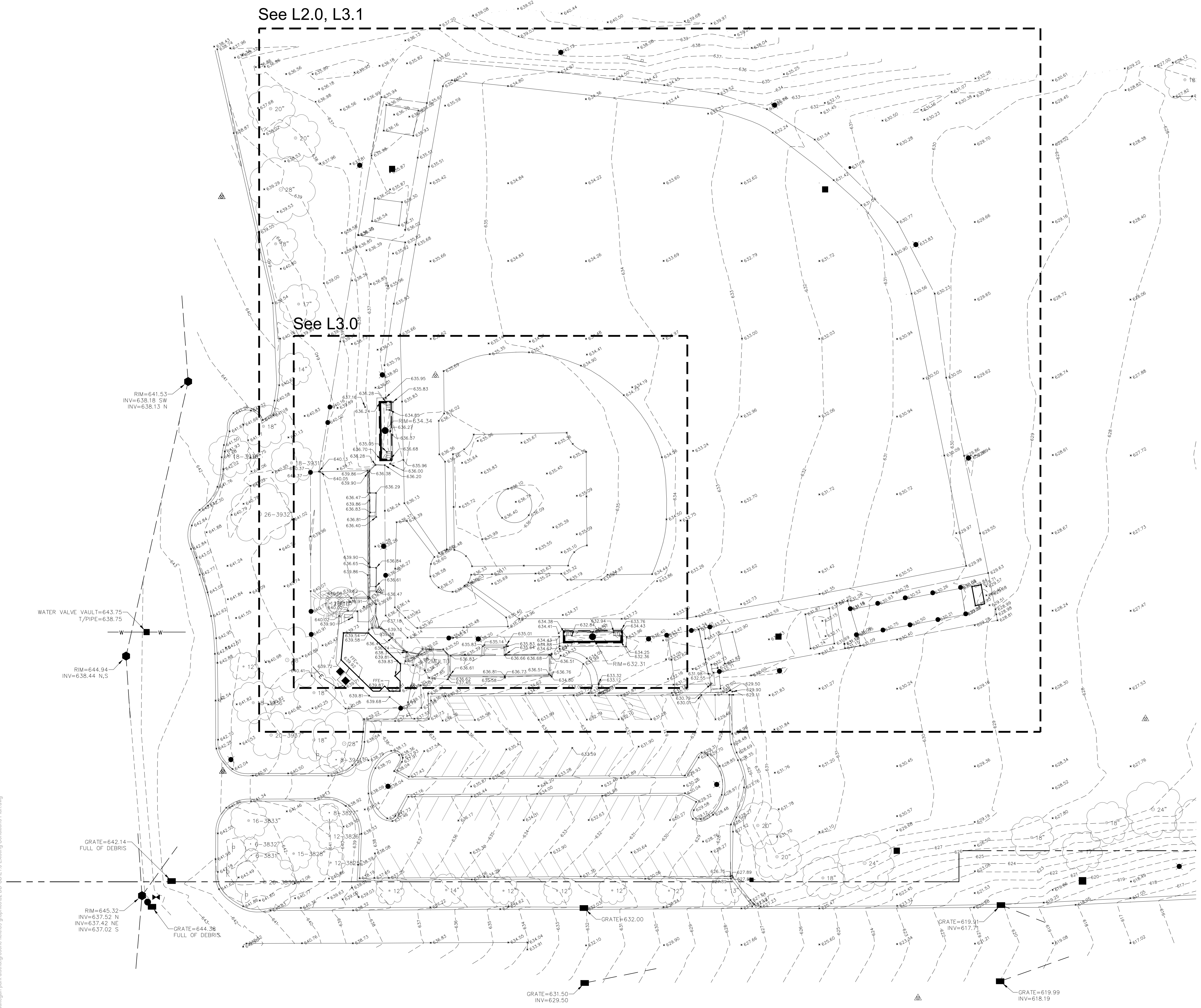
SCALE IN FEET
 1" = 30'
 0' 15' 30' 90'

NORTH
 SHEET NUMBER
L1.0

©2021 Hitchcock Design Group

See L2.0, L3.1

See L3.0



LEGEND

- EXISTING
- STORM MANHOLE
 - STORM INLET
 - STORM INLET
 - STORM DOUBLE INLET
 - ▭ FLARED END SECTION
 - ▭ DOWNSPOUT - ABOVE GROUND
 - ▭ DOWNSPOUT - UNDER GROUND
 - SANITARY MANHOLE
 - SANITARY/STORM CLEANOUT
 - UNKNOWN MANHOLE
 - WATER VALVE
 - POST INDICATOR VALVE
 - HYDRANT
 - SPRINKLER BOX
 - WATER METER
 - WATER SERVICE
 - POWER POLE
 - POWER POLE W/ LIGHT
 - POWER POLE W/ METER
 - GUY WIRE
 - GUY POLE
 - ELECTRIC MANHOLE
 - ELECTRIC PEDESTAL/TRANSFORMER
 - ELECTRIC METER
 - TELEPHONE POLE
 - TELEPHONE MANHOLE
 - TELEPHONE PEDESTAL
 - CABLE TV PEDESTAL
 - UTILITY MANHOLE
 - ◇ UTILITY MARKER
 - HANDHOLE (SINGLE/ DOUBLE)
 - GAS VALVE
 - GAS METER
 - LIGHT POLE
 - LIGHT JUNCTION BOX
 - SIGN
 - FLAGPOLE
 - POST/BOLLARD
 - ADA STALL
 - CONIFER TREE
 - DECIDUOUS TREE
 - ▲ CONTROL POINT
 - BENCHMARK
 - PROPERTY LINE
 - FORCE MAIN
 - SANITARY SEWER
 - STORM SEWER
 - PIPE UNDERDRAIN
 - WATER LINE
 - DE OVERHEAD ELECTRIC
 - E UNDERGROUND ELECTRIC
 - G GAS LINE
 - TV TELEVISION LINE
 - T TELEPHONE LINE
 - FOC FIBER OPTIC CABLE
 - UT UTILITY LINE
 - CHAIN LINK FENCE
 - WIRE FENCE
 - WOOD FENCE
 - - - 100 - - - CONTOUR



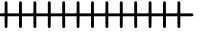

J:\Projects\Alpha\waukegan park district\grosche field\09 graphics\02 DD-CDL1.0 Existing Conditions Plan.dwg



SITE PREPARATION AND REMOVALS NOTES

- Plans indicate general location and limits of removals. Contractor shall perform removals only as necessary for construction of proposed improvements. No additional payments will be made for removals or restoration not required to construct the improvements as drawn and specified. Refer to Layout Plan for more specific information regarding proposed improvements and verify conditions in the field prior to performing removals.
- Sawcut and remove paving to nearest joint where indicated. All saw cuts required for removal items to be included in the unit cost of that particular pay item.
- Items indicated for Removal shall include complete removal of above grade item and below grade appurtenances (foundations, urban fill, wiring, piping, etc.) including disposal off-site following applicable codes and ordinances, unless otherwise shown on the plans.
- Contractor to protect all existing utilities and all other site features not designated for removal. Contractor is responsible for replacing/repairing any existing utilities or other site features damaged during construction to the original condition at no cost to the Owner.
- Contractor responsible for maintaining existing utility services (electrical, sanitary, storm) during construction unless otherwise indicated in the Contract Documents.
- Contractor shall coordinate all work so public sidewalk remains open throughout construction.
- Refer to specifications for additional conditions, standards and notes.

SITE PREPARATION AND REMOVALS LEGEND

-  Remove and dispose asphalt paving. Aggregate base to remain.
-  Item to be removed
-  Fence to be removed (by owner)
-  Limit of sawcut



22 E. Chicago Avenue
Suite 200A
Naperville, IL 60540
T 630.961.1787
hitchcockdesigngroup.com

PREPARED FOR
Waukegan Park District

1324 Golf Avenue
Waukegan, Illinois 60087

PROJECT

Grosche Field Backstop Replacement
1800 North Sheridan Rd
Waukegan, Illinois 60087

ISSUE FOR BID
DECEMBER 10, 2021
REVISIONS

No	Date	Issue

CHECKED BY EFH DRAWN BY JFB

SHEET TITLE
Site Preparation and Removals Plan

SCALE IN FEET
1" = 20'
0' 10' 20' 60'

NORTH SHEET NUMBER

L2.0

J:\Projects\Alpha\waukegan park dist\hitchcock design\grosche field\09 Site Preparation and Removals Plan.dwg



22 E. Chicago Avenue
Suite 200A
Naperville, IL 60540
T 630.961.1787
hitchcockdesigngroup.com

PREPARED FOR

Waukegan Park District

1324 Golf Avenue
Waukegan, Illinois 60087

PROJECT

Grosche Field Backstop Replacement
1800 North Sheridan Rd
Waukegan, Illinois 60087

GRADING NOTES

- All surfaces shall be graded for positive drainage. Grade pathways for 2% cross slope in direction shown on plan. Grade to divert water away from all walls, columns, steps, and structures. Where direction is not shown, cross slopes shall be in direction needed to achieve positive drainage.
- Maximum slope of 20:1 on all paved areas unless otherwise noted. Slopes greater than 20:1 will not be accepted.
- All slopes between spot elevations on pathways shall be consistent.
- Feather newly graded areas into existing grade.
- Promptly notify Owners Representative if unsatisfactory sub-grade materials are discovered.
- Refer to specifications for additional conditions, standards and notes.

GRADING LEGEND

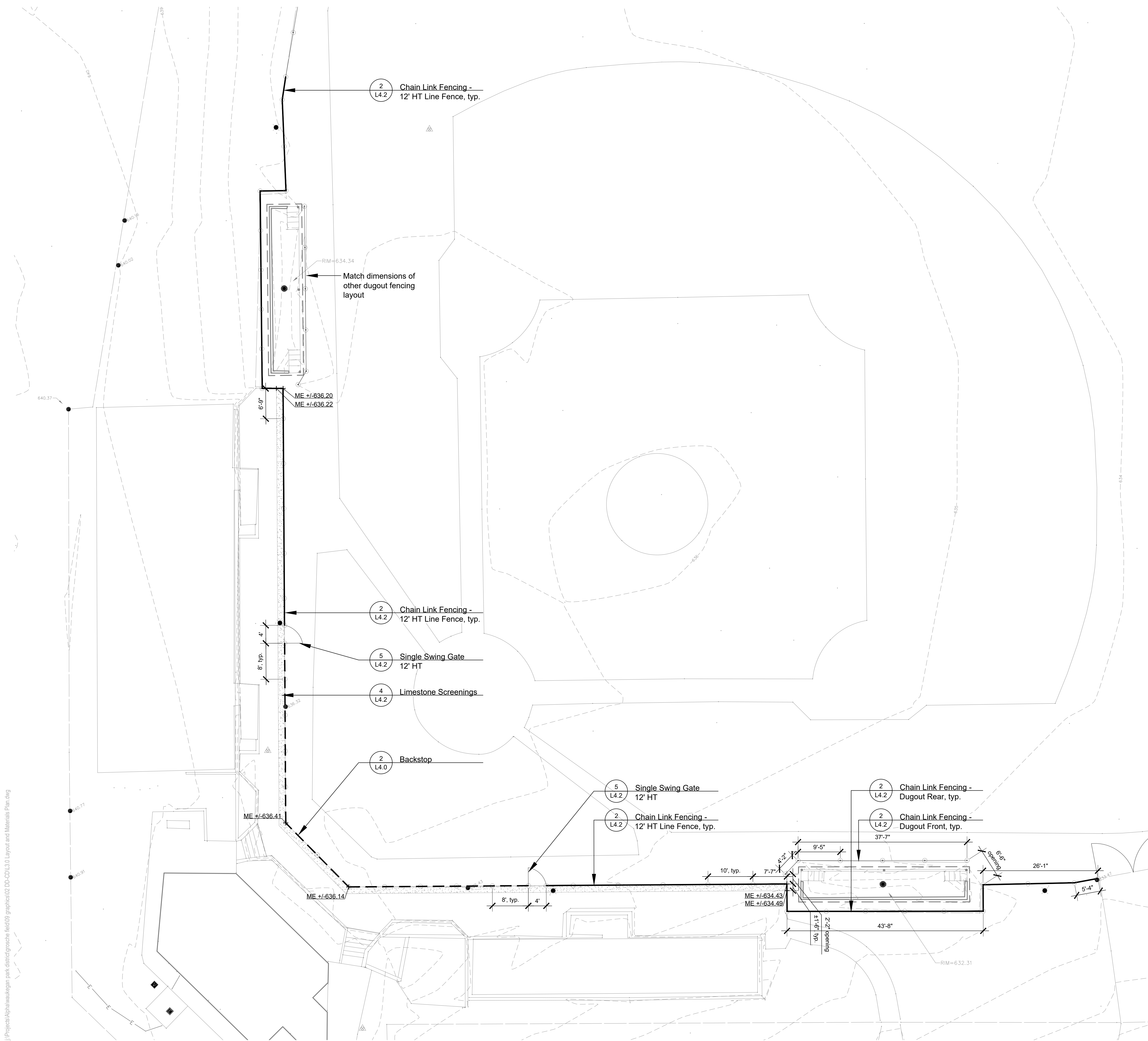
- +829.00 Spot Elevation
- +ME Match Existing

LAYOUT NOTES

- Contractor responsible for field layout of all new improvements. Digital files of geometric information will be provided upon request in AutoCAD format. No additional payment will be made for adjustments necessary to construct the work as drawn.
- Contractor responsible to coordinate work in order to obtain approval of all layout by Owners Representative prior to construction. No additional payment will be made to correct work if constructed incorrectly without pre-approval by Owners Representative.
- Contractor responsible to maintain all layout stakes during construction. No additional payment will be made to replace layout stakes.
- Place stakes at edges of sports fields and every 25 feet on center along centerline of all pathways for review by the Owner's Representative prior to earthwork operations.
- Adjustment to stake locations due to discrepancies between coordinates and dimensions is incidental to the contract. No additional payments will be made for this work.
- Contractor responsible to take delivery, assemble and install all materials and furnishings per manufacturer's instructions.
- Refer to specifications for additional conditions, standards and notes.

LAYOUT LEGEND

- Limestone Screenings
- Chain Link Fence - backstop
- Chain Link Fence - 12' HT
- Chain Link Fence - 6' HT



ISSUE FOR BID
DECEMBER 10, 2021
REVISIONS

No	Date	Issue

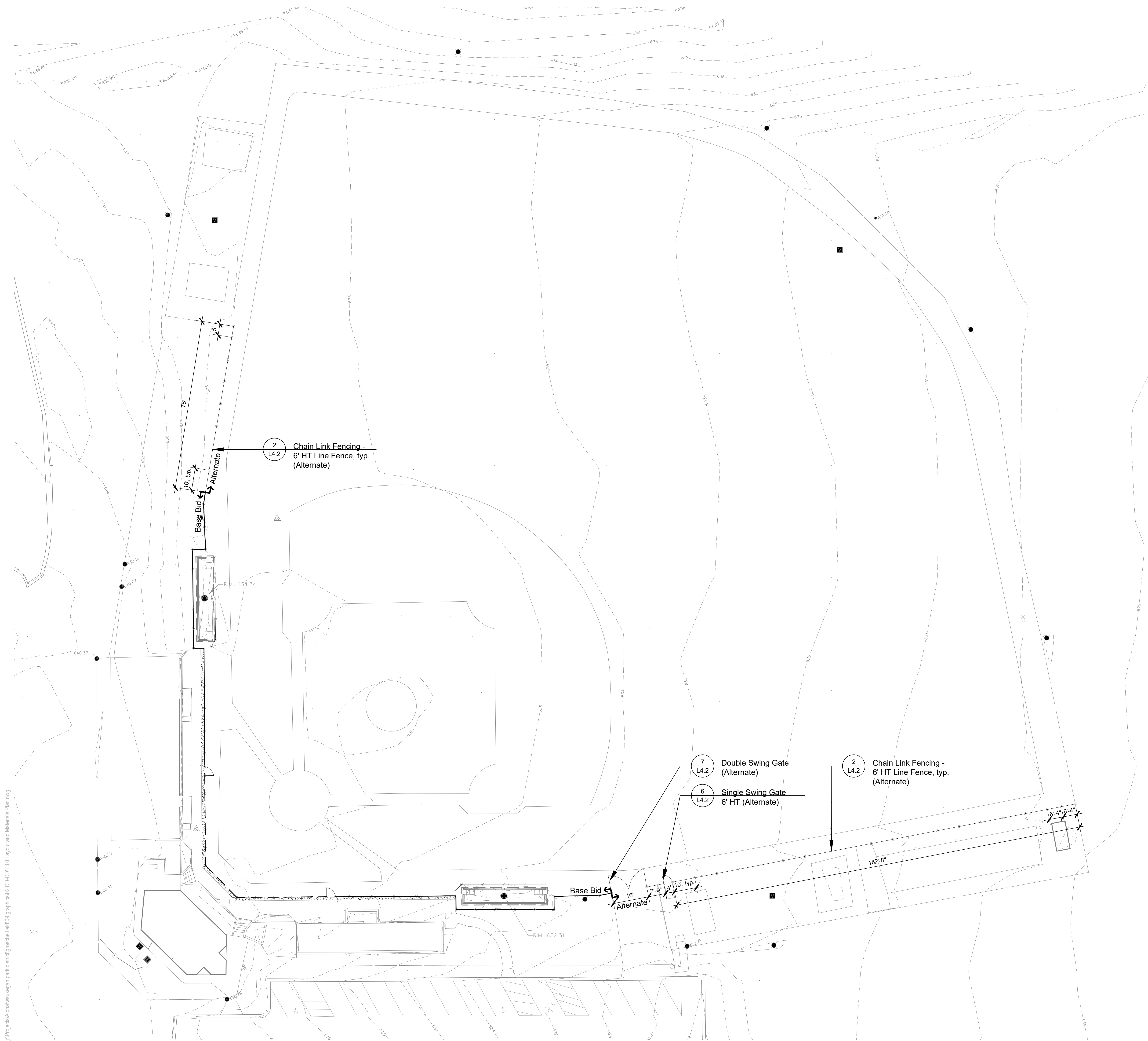
CHECKED BY EFH DRAWN BY JFB

SHEET TITLE
Grading, Layout, and Materials Plan

SCALE IN FEET
1" = 10'

NORTH SHEET NUMBER
L3.0
©2021 Hitchcock Design Group


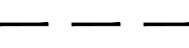
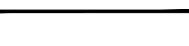

J:\Projects\Alpha\waukegan park dist\cd\grosche field\09_graphics\02_DD-CD\L3.0_Layout and Materials Plan.dwg



LAYOUT NOTES

1. Contractor responsible for field layout of all new improvements. Digital files of geometric information will be provided upon request in AutoCAD format. No additional payment will be made for adjustments necessary to construct the work as drawn.
2. Contractor responsible to coordinate work in order to obtain approval of all layout by Owners Representative prior to construction. No additional payment will be made to correct work if constructed incorrectly without pre-approval by Owners Representative.
3. Contractor responsible to maintain all layout stakes during construction. No additional payment will be made to replace layout stakes.
4. Place stakes at edges of sports fields and every 25 feet on center along centerline of all pathways for review by the Owner's Representative prior to earthwork operations.
5. Adjustment to stake locations due to discrepancies between coordinates and dimensions is incidental to the contract. No additional payments will be made for this work.
6. Contractor responsible to take delivery, assemble and install all materials and furnishings per manufacturer's instructions.
7. Refer to specifications for additional conditions, standards and notes.

LAYOUT LEGEND

-  Limestone Screenings
-  Chain Link Fence - backstop
-  Chain Link Fence - 12' HT
-  Chain Link Fence - 6' HT



22 E. Chicago Avenue
Suite 200A
Naperville, IL 60540
T 630.961.1787
hitchcockdesigngroup.com

PREPARED FOR
Waukegan Park District

1324 Golf Avenue
Waukegan, Illinois 60087

PROJECT
Grosche Field Backstop Replacement
1800 North Sheridan Rd
Waukegan, Illinois 60087


ISSUE FOR BID
DECEMBER 10, 2021
REVISIONS

No	Date	Issue

CHECKED BY: EFH DRAWN BY: JFB

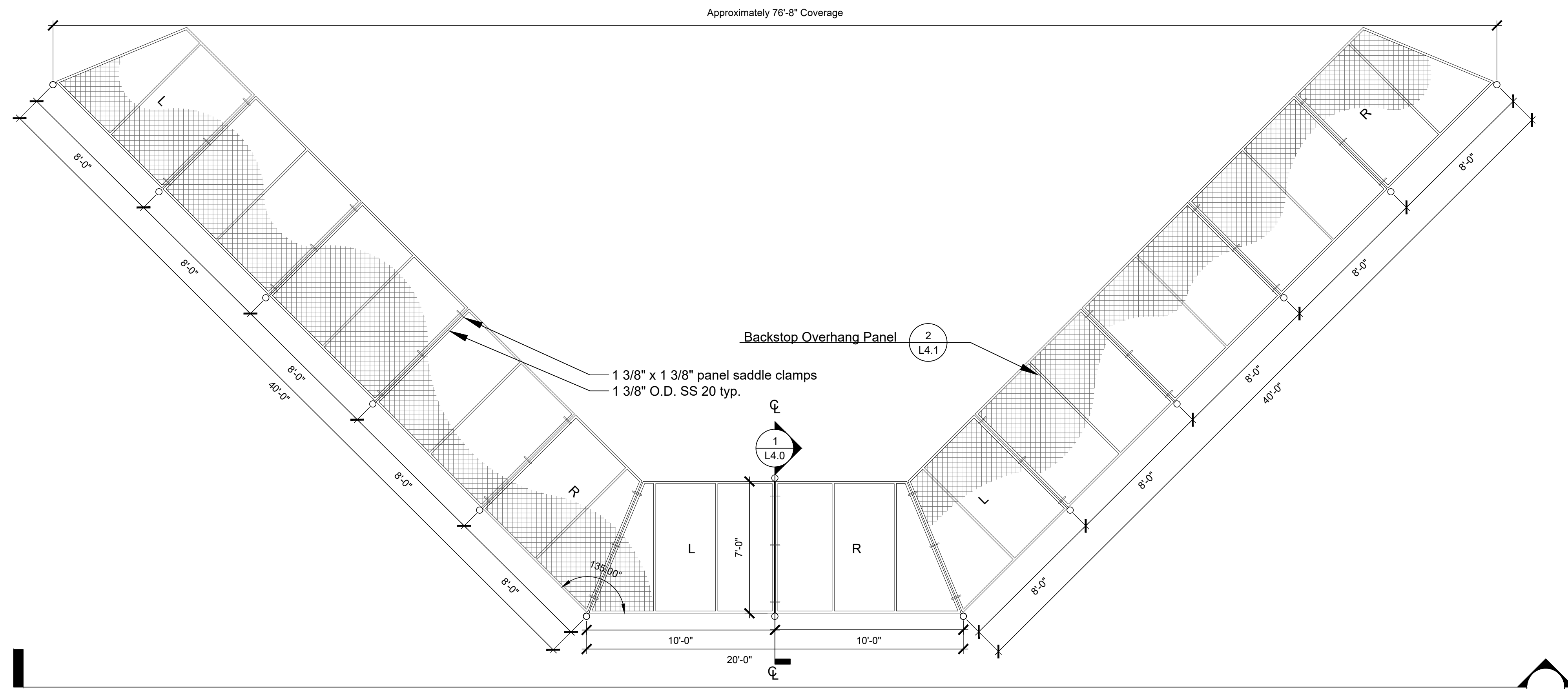
SHEET TITLE
Grading, Layout, and Materials Plan Alternate

SCALE IN FEET
1" = 20'



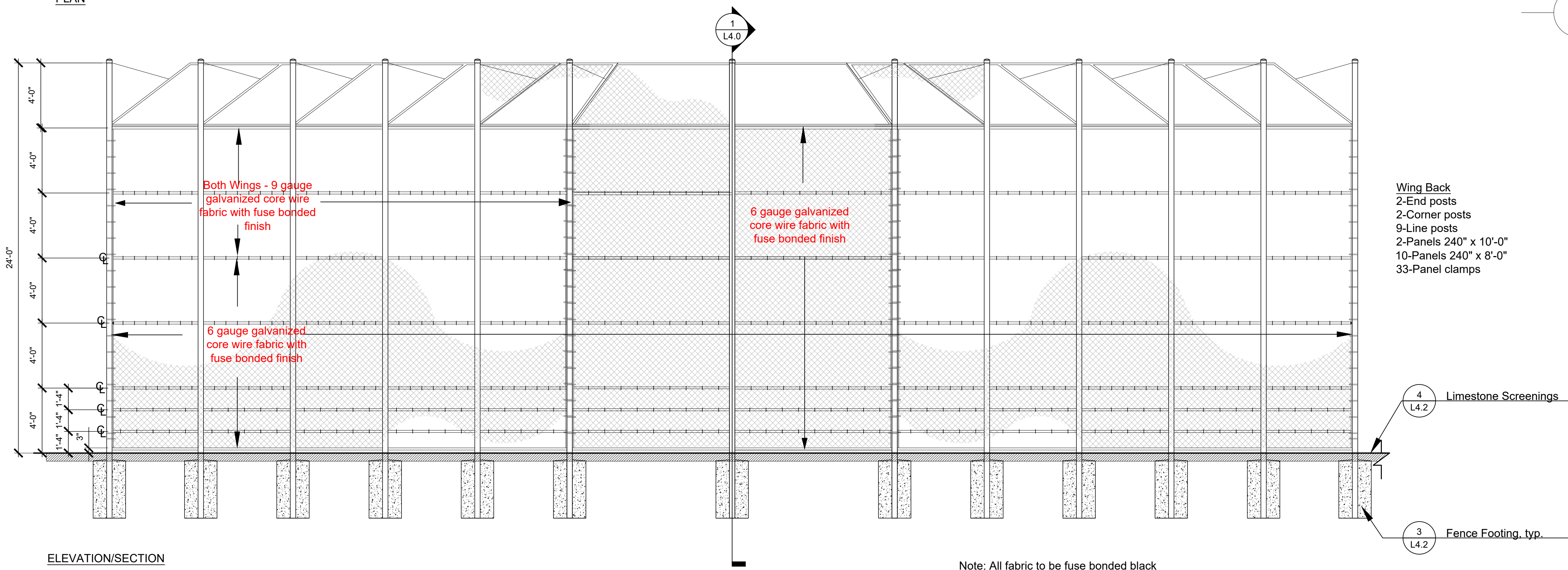
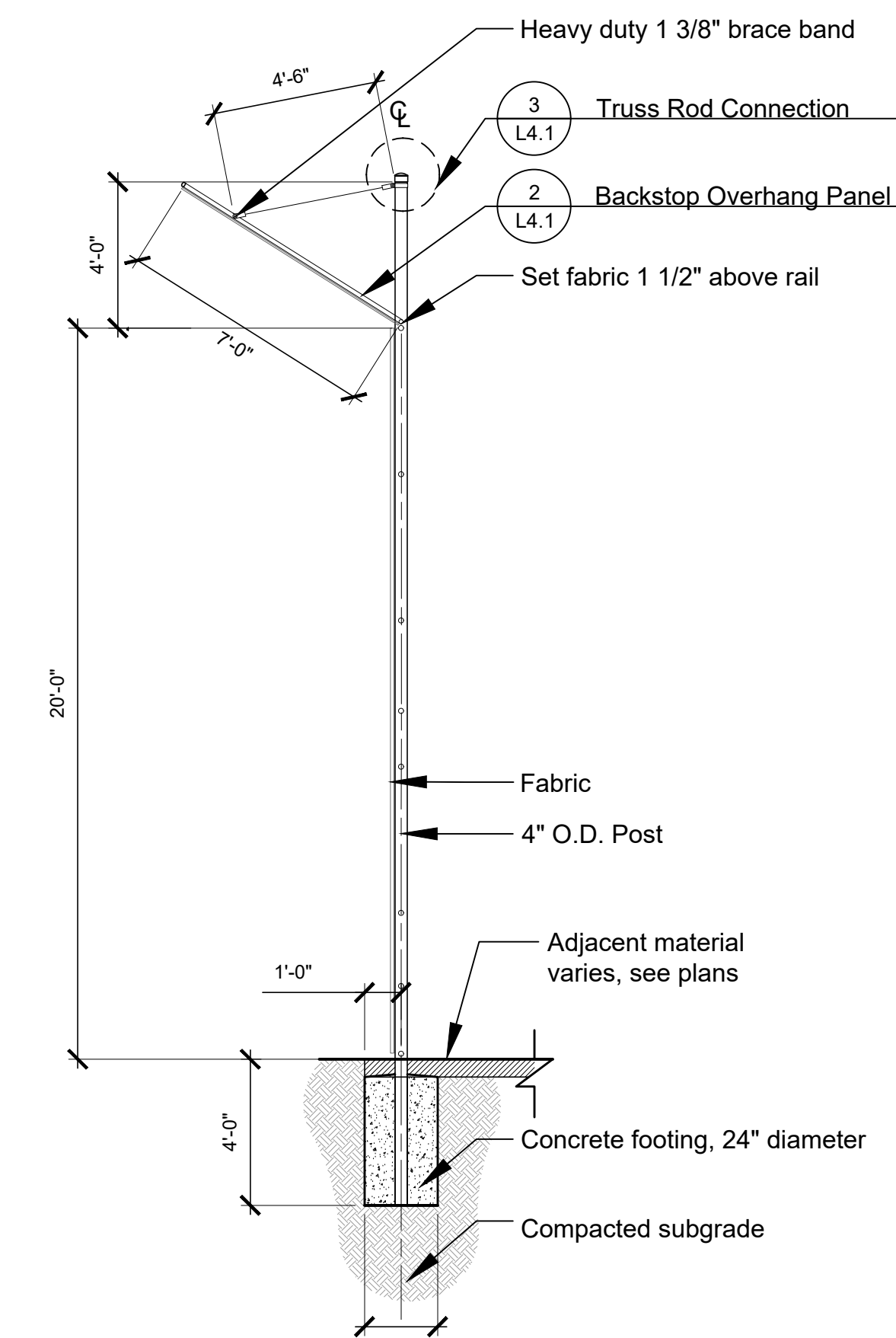
NORTH SHEET NUMBER

 **L3.1**



PLAN

1 Backstop Section
1/4" = 1'-0"



ELEVATION/SECTION

2 Backstop
1/4" = 1'-0"



22 E. Chicago Avenue
Suite 200A
Naperville, IL 60540
T 630.961.1787
hitchcockdesigngroup.com

PREPARED FOR
Waukegan Park District

1324 Golf Avenue
Waukegan, Illinois 60087

PROJECT

Grosche Field Backstop Replacement
1800 North Sheridan Rd
Waukegan, Illinois 60087

ISSUE FOR BID
DECEMBER 10, 2021
REVISIONS

No	Date	Issue

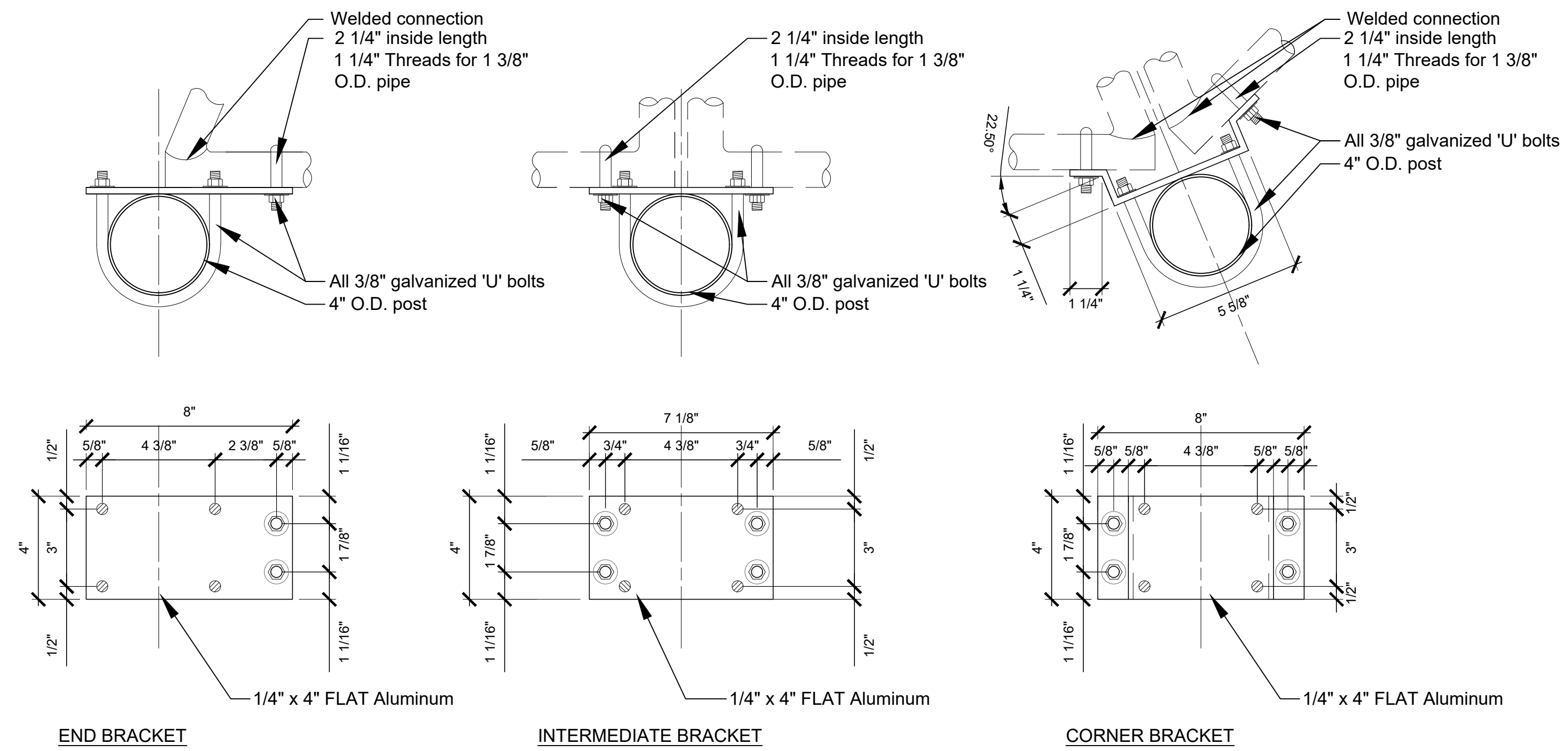
CHECKED BY EFH DRAWN BY JFB

SHEET TITLE
Details

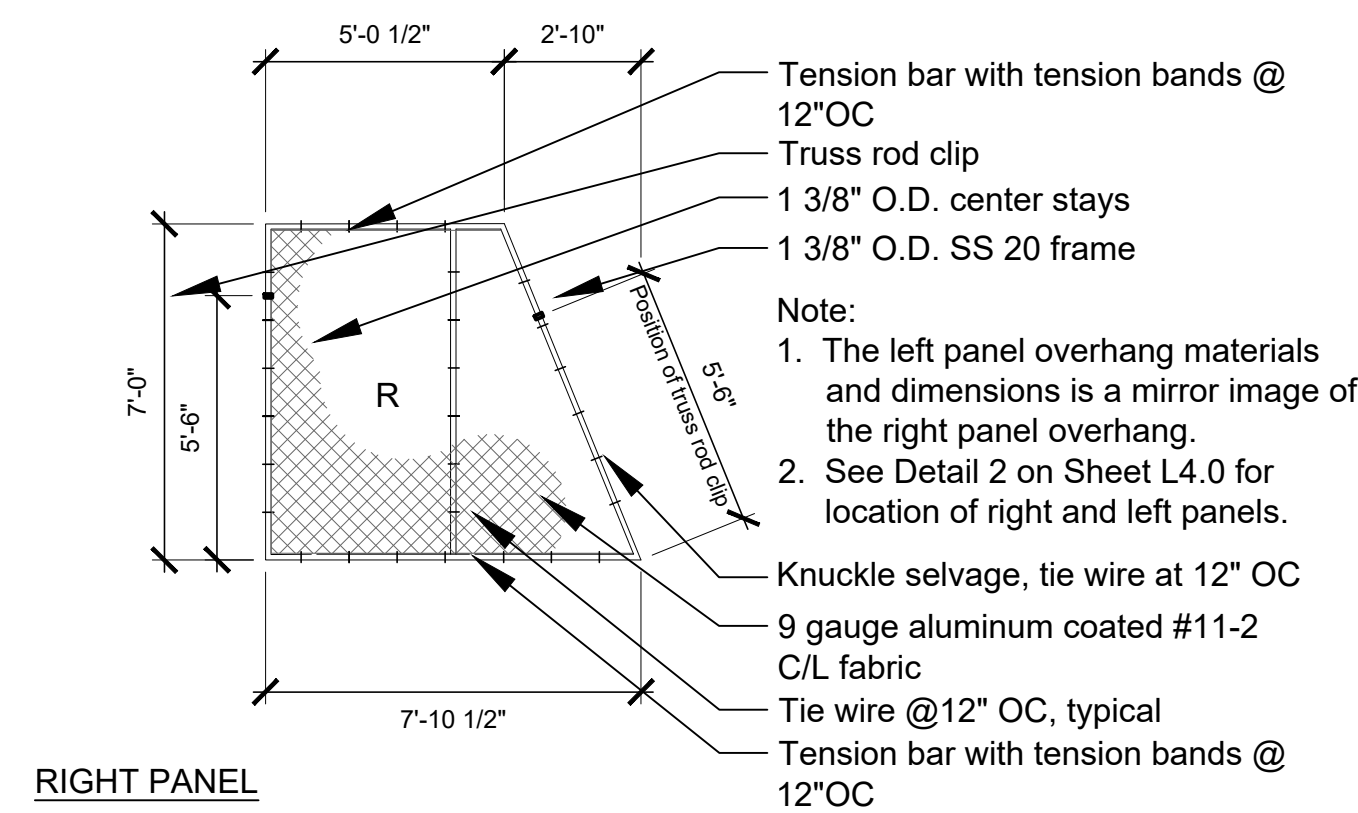
SCALE IN FEET
as noted

NORTH SHEET NUMBER
L4.0

©2021 Hitchcock Design Group



1 Backstop Brackets
3" = 1'-0"



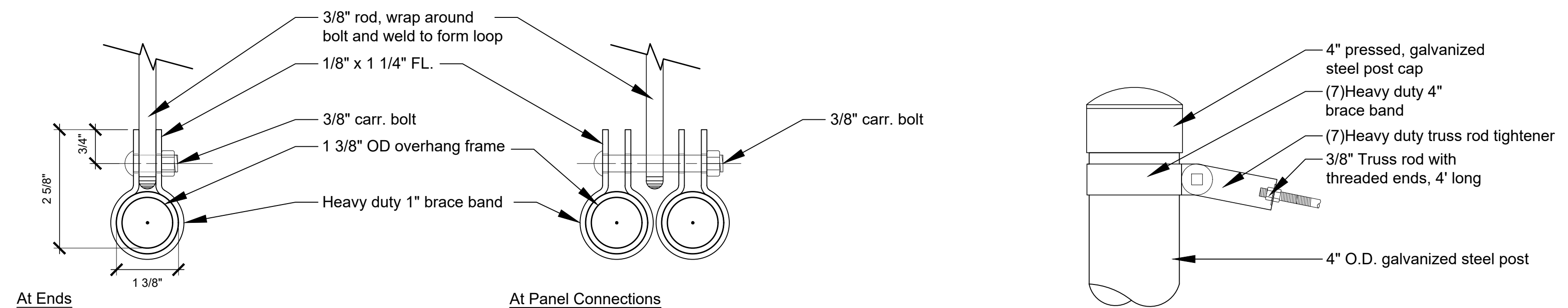
Notes:

- The overhang panels have been designed 84" in height (for shipping) and 8'-0" wide. The panels are right and left hand styles and should be used in pairs.
- The fabric has been installed on the top side of the panels and should be erected accordingly. Some customers prefer the fabric on the underside of the overhang. In these cases reverse the panels.
- All fabric shall be aluminum coated.

Chain link fabric sizes:

- Backs:** 6 gauge 2" mesh
Wings: 9 gauge 2" mesh
Overhang: 9 gauge 2" mesh
Backstop size: 40'x20'x40'

2 Backstop Overhang Panel
1/4" = 1'-0"



4 Backstop Truss Rod Clips
6" = 1'-0"

3 Truss Rod Connection
3" = 1'-0"

ISSUE FOR BID
DECEMBER 10, 2021
REVISIONS

No	Date	Issue

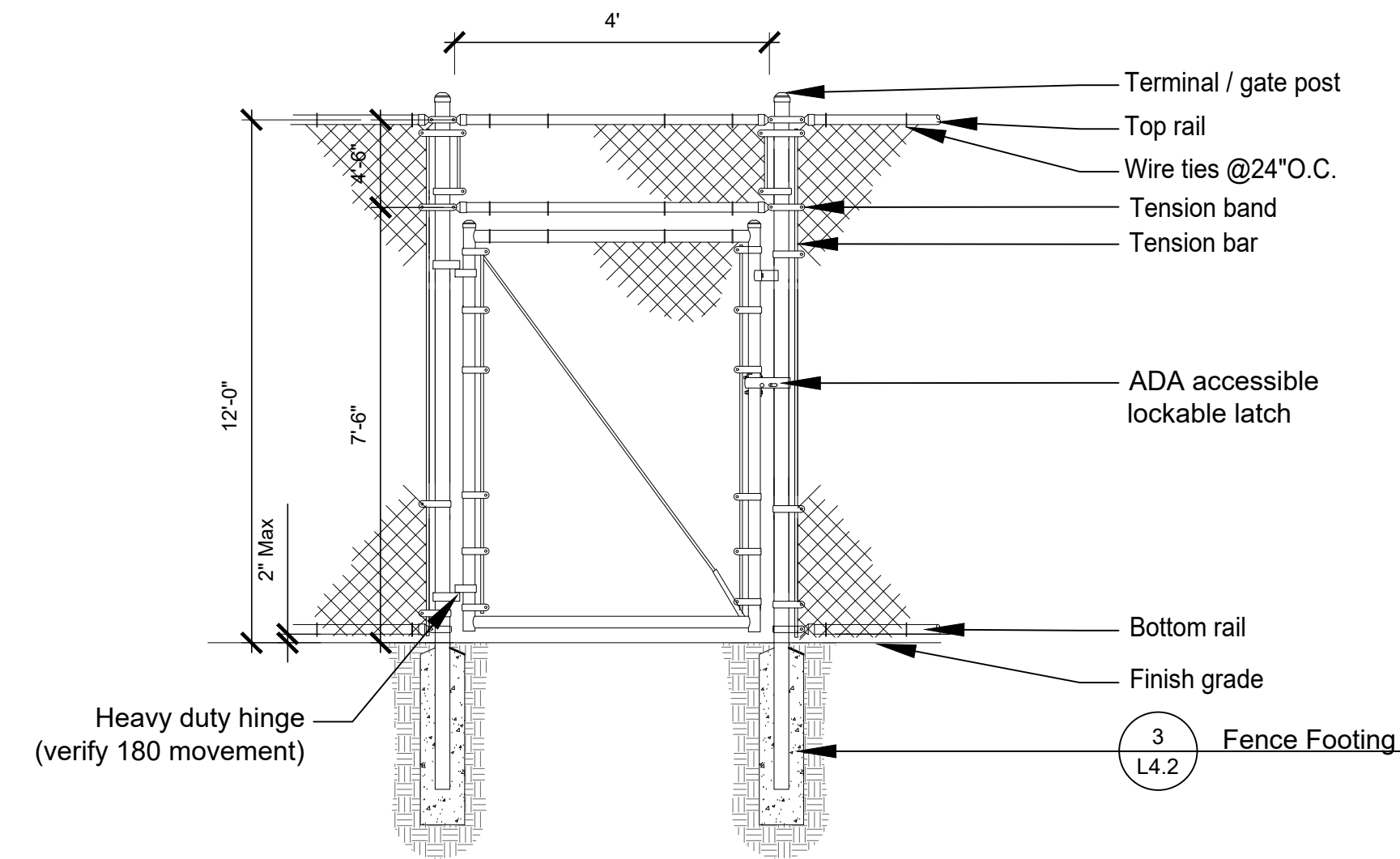
CHECKED BY: EFH
DRAWN BY: JFB

SHEET TITLE
Details

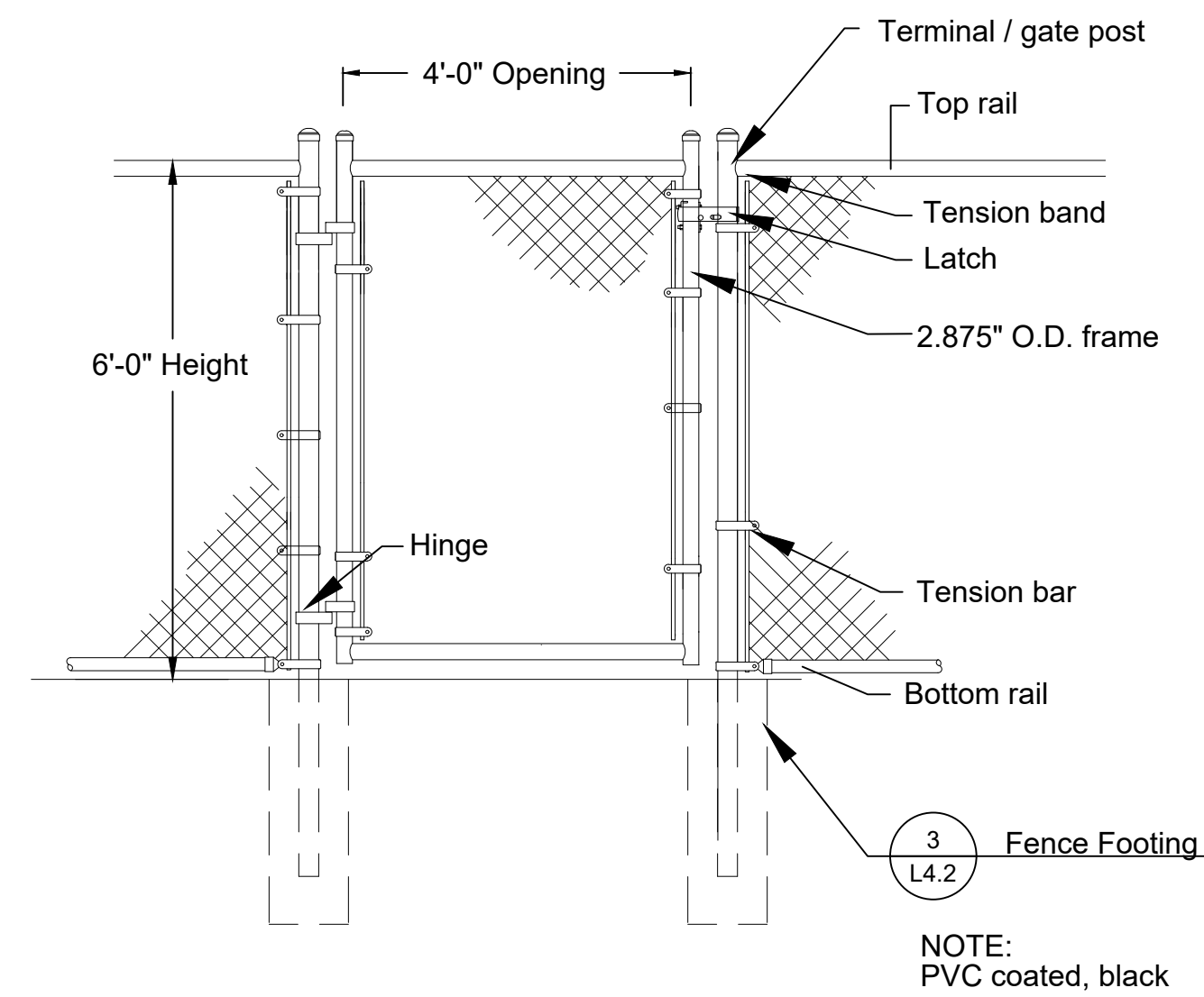
SCALE IN FEET
as noted

NORTH
SHEET NUMBER

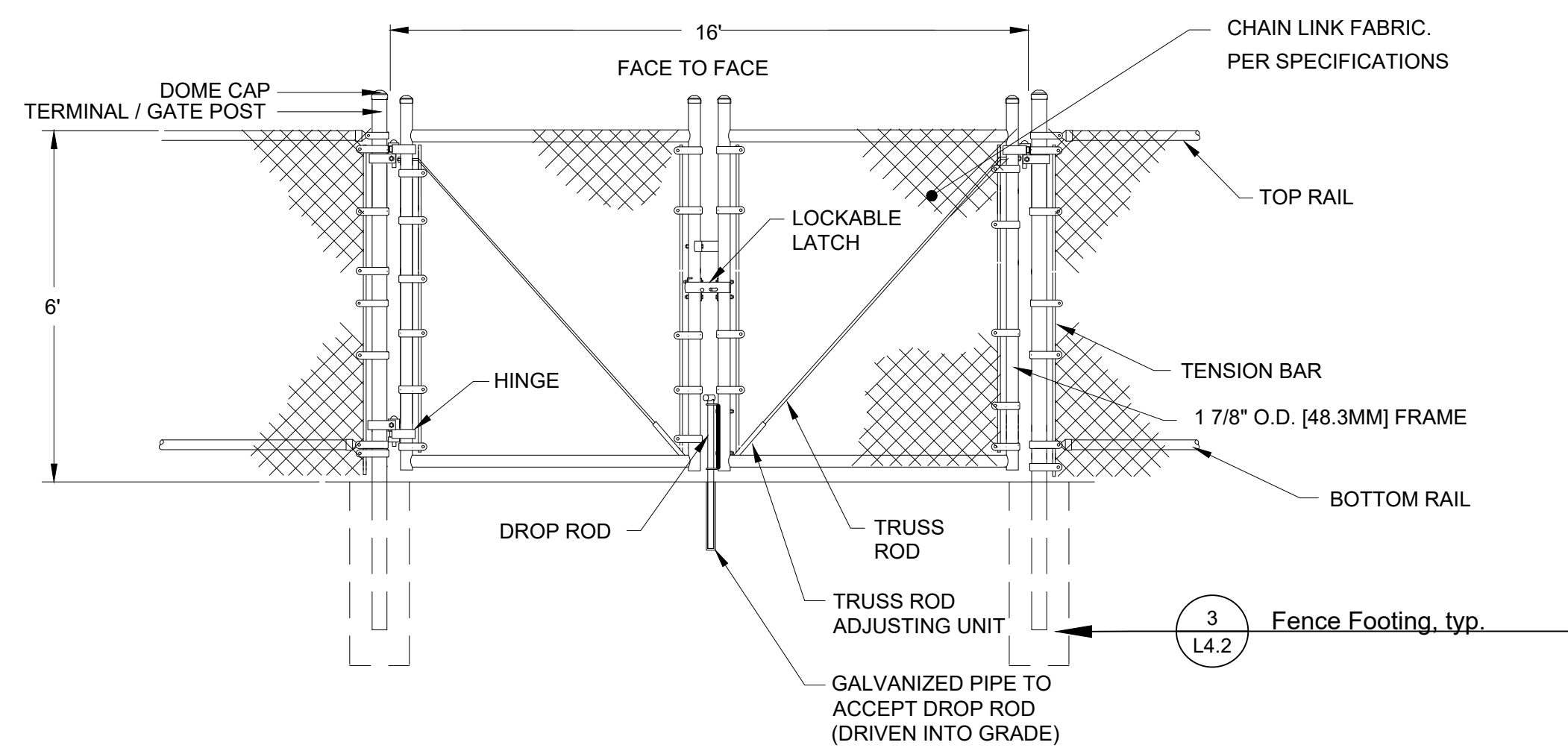
L4.1



5 Single Swing Gate 12' HT
N.T.S.



6 Single Swing Gate 6' HT (Alternate)
N.T.S.



TYPICAL DOUBLE SWING GATE ELEVATION / SECTION
TOP RAIL / BOTTOM RAIL

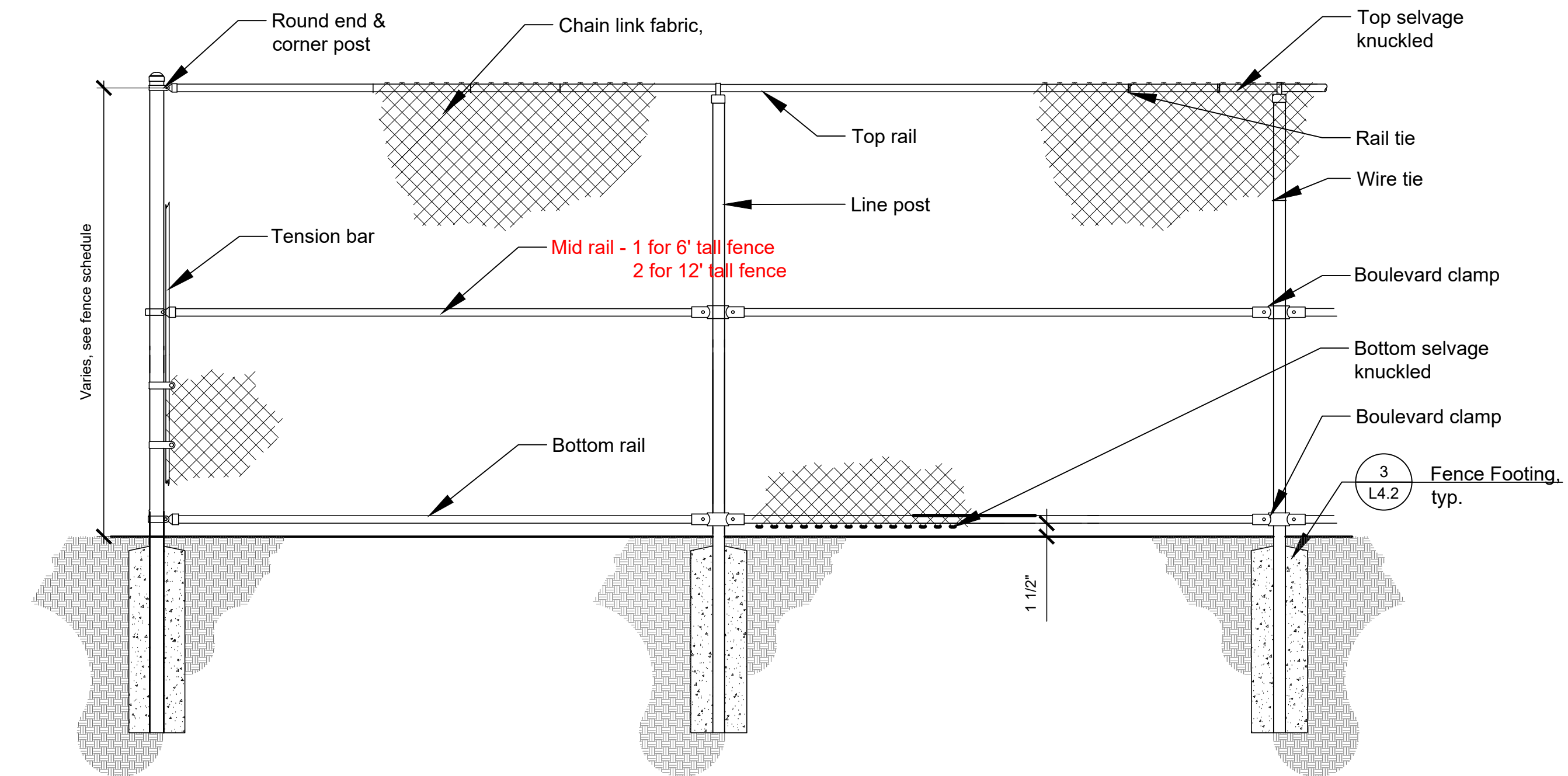
NOTES:
DESIGN AND SPECIFICATION SUBJECT TO CHANGE. VERTICAL & HORIZONTAL MEMBERS MAXIMUM 8' O.C.
FOOTING AND POSTS AS REQUIRED BY SITE CONDITIONS & CODES

7 Double Swing Gate (Alternate)
N.T.S.

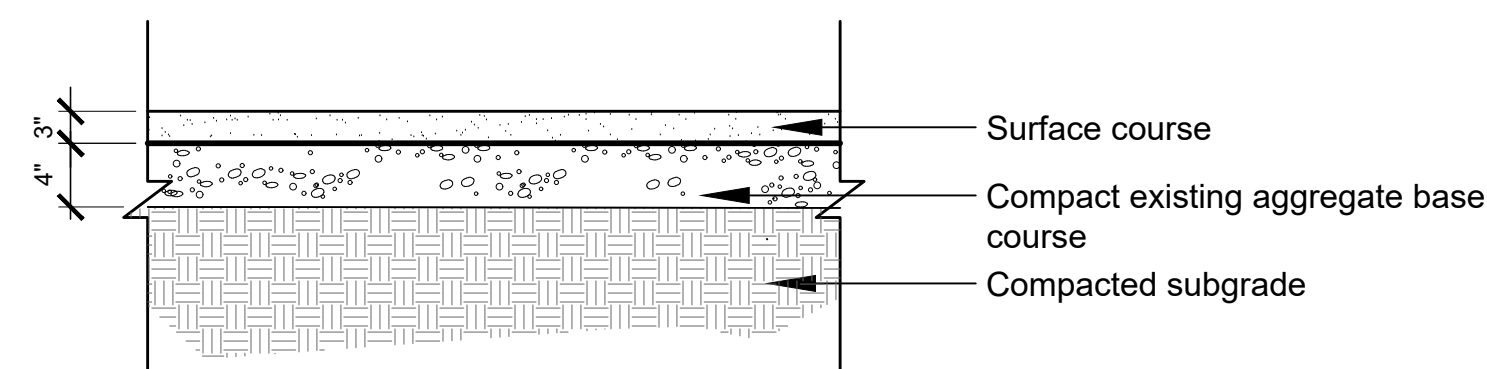
6 GA./2" for Lower 20' of Rear and Lower 12' of Wings
9 GA./2" for Remainder of Backstop

Chainlink Fence Schedule												
Description	Height	Fabric (Height/Gauge/Mesh)	Footing Depth	Terminal Posts	Line Posts	Line Post Spacing	Top Rail	Center Rail	Bottom Rail	Truss Rod W/ Turnbuckle	Tension Wire	Finish
Backstop	24'	See Note Above		4" O.D.	4" O.D.	Max 10'-0" See Plans	1.66"	1.66"	1.66"	None	None	Black PVC
12' HT Line & Dugout Rear	12'	6 GA. / 2"	42"	3" O.D.	3" O.D.	Max 10' O.C. See Plans	1.66"	1.66"	1.66"	None	None	Black PVC
6' HT Line & Dugout Front	6'	6 GA. / 2"	42"	3" O.D.	3" O.D.	Max 10' O.C. See Plans	1.66"	1.66"	1.66"	None	None	Black PVC

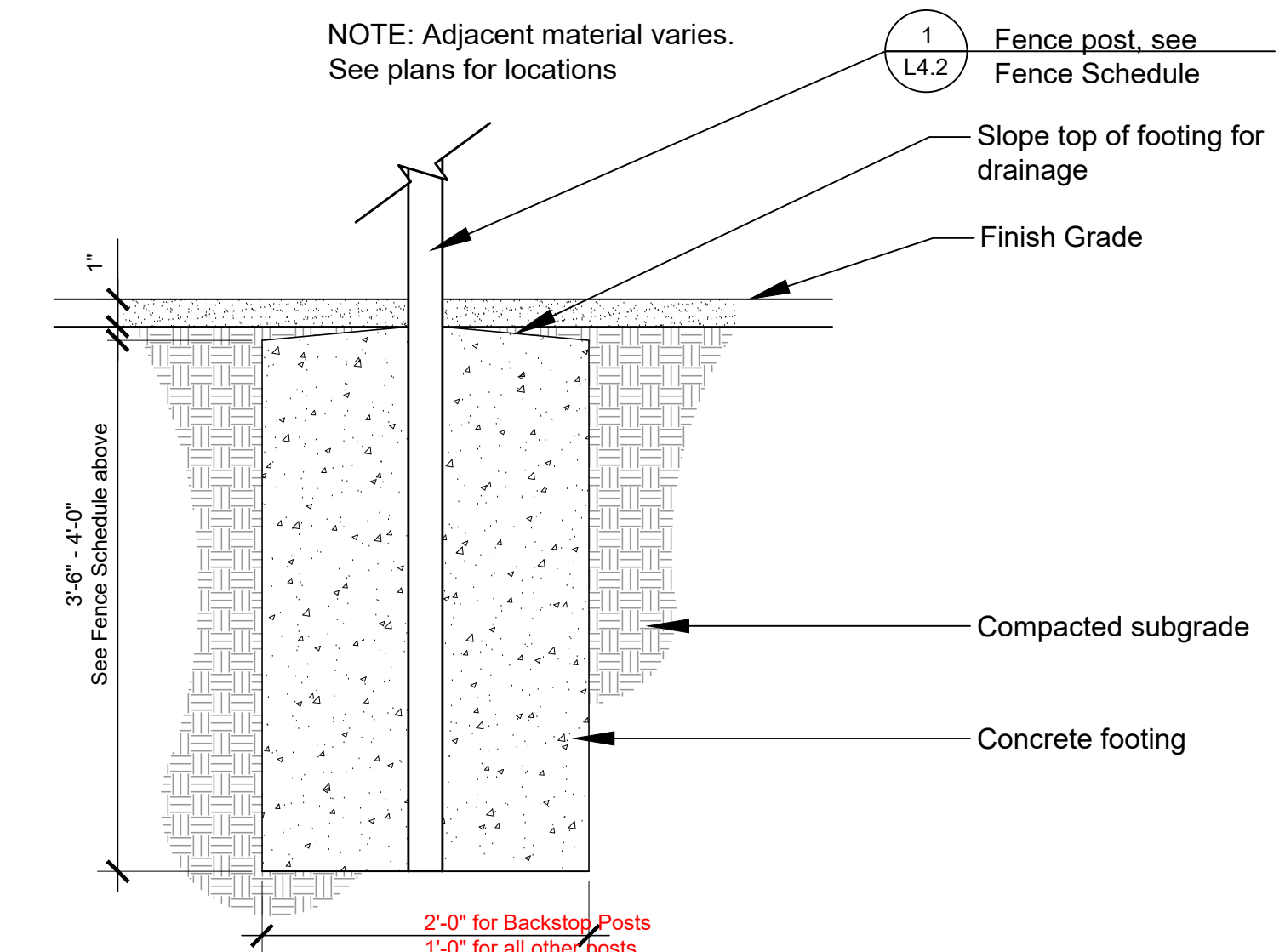
1 Fence Schedule
3/4" = 1'-0"



2 Chain Link Fencing
1/2" = 1'-0"



4 Limestone Screenings (Optional Alternate)
1" = 1'-0"



3 Fence Footing
1" = 1'-0"

ISSUE FOR BID
DECEMBER 10, 2021
REVISIONS

No	Date	Issue

CHECKED BY: EFH
DRAWN BY: JFB

SHEET TITLE
Details

SCALE IN FEET
as noted

NORTH
SHEET NUMBER

L4.2