

WAUKEGAN PARK DISTRICT

PROFILE

Chartered

Established by local referendum on December 26, 1916 as a special purpose unit of government as provided by the Illinois Park District Code.

Governance

An elected Board of Park Commissioners consisting of 5 members constitutes the governing board of the Park District. Commissioners are elected to serve 6-year term. Commissioners serve without receiving any compensation.

Officers

Commissioners elect from among themselves a President, Vice President and a Treasurer. The President, Vice President and Treasurer serve 1-year terms.

Appointed Officials

Commissioners appoint an Executive Director and an Attorney/Secretary. The Executive Director serves as the chief executive officer for the Park District and carries out the policies of the Board.

Boundaries

Park District is approximately coterminous with the City of Waukegan north of Tenth Street. The Park District also includes most of the Waukegan Township and portions of Benton, Warren, Newport, and Libertyville Townships, and portions of Beach Park and Gurnee Villages. The Park District boundaries encompass approximately 21 square miles.

Population:

Park District population is approximately 90,900 (2000).

Real Estate

Equalized assessed value of real estate for 2008 is \$1,629,849,667.

Tax Rate

Levy year 2008 - \$0.616 per \$100 of assessed value.

Fiscal Year Budget

Proposed operating and capital budget for FY 2009-10 is \$30,636,978. The fiscal year begins on May 1 and concludes on April 30.

Bond Rating

Moody's Rating Service rates the 1999 Bond Issue, 2004 Bond Issue, 2005 Bond Issue A1 and 2008B Bond Issue as A1.

Park Resources

The district has 47 properties and control of 720 acres of land, which includes the 18-hole Bonnie Brook Golf Course and the 9-hole Greenshire Golf Course. Other park resources include a bird sanctuary, nature preserve and a greenhouse. The District operates 3 recreation centers: Belvidere Recreation Center, Bevier Center, the Community Recreation Center (leased by The Boys & Girls Club of Lake County) and the Field House Sports and Fitness Center at Hinkston Park, as well as the Jack Benny Center for the Arts, an outdoor swimming pool (Howard E. Ganster), the Haines Museum, 1 rental hall (Jane Addams Center), 15 ball diamonds, 6 soccer fields, 13 tennis courts, 12 picnic areas, 7 picnic shelters, 32 playgrounds, 14 basketball courts, 1 skate park, 1 BMX track, 1 disc golf course and 1 fitness center.

Programs and Services

Provides a full range of activities and services year round. Major recreation programs include athletics, music, visual arts, dance, drama, day camps, fitness, preschools, outdoor recreation, trips, and special events. Programs and services are provided for special populations such as senior citizens and individuals with disabilities. The District sponsors the Waukegan Symphony Orchestra and Concert Chorus. The District also sponsors the Bowen Park Theatre Company and the Bowen Park Opera Company.

Staffing

Sixty-one authorized full-time staff and over 250 part-time, year round, seasonal and temporary employees.

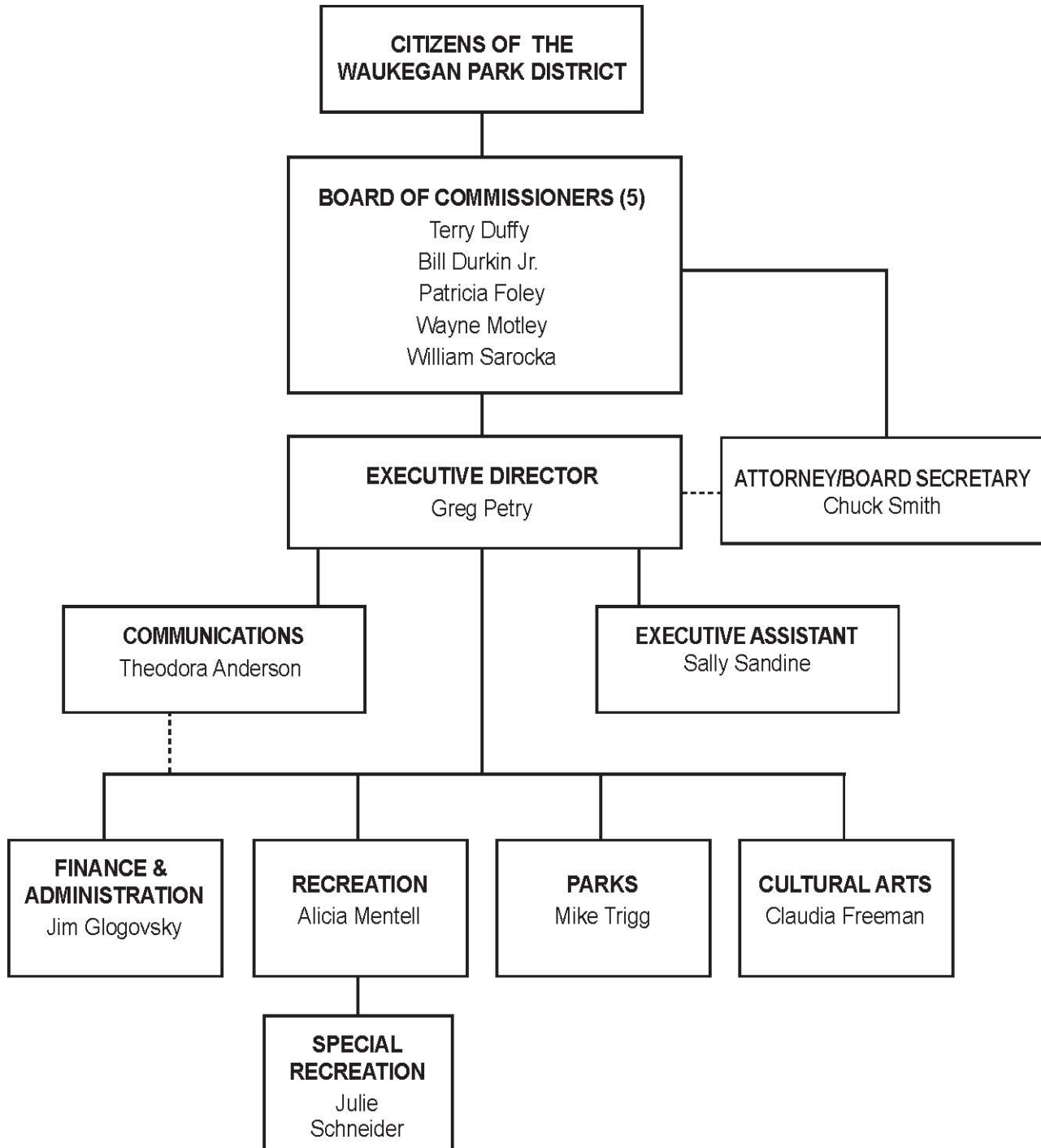
Affiliations

National Recreation and Park Association (NRPA), Illinois Association of Park Districts (IAPD), and Illinois Park and Recreation Association (IPRA).

Waukegan Park District
Telephone: (847) 360-4712
Fax: (847) 244-8270
Website: www.waukeganparks.org
04.16.09

WAUKEGAN PARK DISTRICT

ORGANIZATIONAL CHART



WAUKEGAN PARK DISTRICT
REVENUE: FISCAL YEAR 2009-10

Category	Amount	%
Real Estate Tax	9,939,798	48.92%
Bond Proceeds	1,510,000	7.43%
Replacement Tax	861,123	4.24%
Interest Income	467,675	2.30%
Fitness Center	569,873	2.80%
Food & Beverage	520,600	2.56%
Green Fees	557,950	2.75%
Recreation Program Fees	405,446	2.00%
Contributions/Grants/Shared Revenue	345,175	1.70%
Fees & Rentals	312,269	1.54%
Golf Passes	137,780	0.68%
Carts	218,700	1.08%
Cultural Arts Program Fees	95,618	0.47%
Fieldhouse Program Fees	15,054	0.07%
Golf Shop	79,765	0.39%
Miscellaneous	108,416	0.53%
All Other Revenue	125,905	0.62%
Total Revenue	\$ 16,271,147	80.08%
Interfund Transfers	4,047,801	19.92%
Total	\$ 20,318,948	100.00%

All Other Revenue Includes:

Special Recreation Program Fees	29,898	0.15%
Pool Admissions	25,320	0.12%
Leagues & Reserved Time	20,560	0.10%
Concessions	17,130	0.08%
Driving Range	13,000	0.06%
Symphony Fees	7,000	0.03%
Golf Rentals	6,300	0.03%
Museum Program Fees	1,660	0.01%
Pool Passes	2,037	0.01%
Golf Program Fees	3,000	0.01%
Total	125,905	

WAUKEGAN PARK DISTRICT

EXPENSE: FISCAL YEAR 2009-10

Category	Amount	%
Debt Services	4,821,110	13.90%
Capital Outlay	16,656,234	48.02%
Salaries & Wages	4,212,823	12.15%
Services	2,076,554	5.99%
Insurance	897,498	2.59%
Utilities	532,720	1.54%
Maintenance & Repair	417,600	1.20%
Materials & Supplies	318,060	0.92%
Recreation Programs	308,683	0.89%
Merchandise	203,995	0.59%
Cultural Arts Programs	72,003	0.21%
Fieldhouse Programs	23,756	0.07%
All Other	95,942	0.28%
Total Expenditure	\$ 30,636,978	88.33%
Interfund Transfer	4,047,801	11.67%
Total	\$ 34,684,779	100.00%

All Other Includes:

Miscellaneous	14,970	0.04%
Special Recreation Programs	40,507	0.12%
Contracted Services	34,040	0.10%
Museum Programs	4,425	0.01%
Golf Programs	2,000	0.01%
Total	95,942	